

TECHNICAL PLAN

Bert & Fred

8 Years, 5 months, 4 weeks, 2 days



Contact: Bert Loenders
info@bert-fred.com
+32 476 36 37 81

Team: Depending upon availability the 2 technicians will be:
Lorelinde Hoet, 00 32 498 57 38 25, lorelindehoet@gmail.com
OR Bregt Janssens, 00 32 498 33 09 07, janssensbregt@hotmail.com
OR Nele Verreyken, 00 32 472 54 85 17, neleverreyken@gmail.com
OR Sam Pringuet, 00 32 485 73 27 26, sam.pringuet@hotmail.com

Planning:

10h	Arrival + Coffee (2 artists + 2 technicians)
10h15 – 13h	Set-up and rigging of our aluminium frame decor en attributes, hanging lights
13h - 14h	Lunch break (at the venue)
14h - 16h	Finishing of the set-up + Programming + light focussing
16h - 17h45	Sound and light check's + rehearsals
17h30	Diner (at the venue)
18h45	Warm-up
19h45	Doors open
20h15	Show
21h20	End of show
23h00	End of build down



This technical plan can not be modified without the approval of the company. It represents the best possible conditions for the performance. However we're flexible and always try to find a way to make it possible, even in smaller or more difficult venues.

Transport: 2 parking places for:

- Citroën Jumper with license plate: 1-HNE-888 (L: 6m H: 2,5m W: 2,1m)
- 1 extra parking place

Dressing room: near the performance space, if possible with a shower
Provide mirror, towels and water

Catering: 4 persons, of which 2 vegetarians

Space: Version low stage: min 5,5m height till the fly-system
Version high stage: min 7m height till the fly-system
Stage min. 10m x 10m
Black backdrop and minimum 4 coulisses

Rigging: We provide our own aluminium truss frame of (4m80 x 2m)
Total working load of this structure: 1T SWL

In the air

The frame can be rigged in 2 different ways:

OPTION 1: Directly **on the fly system** of the theatre

We provide roundslings to attach our frame to the bars

Depending on the SWL it will be on approximately 5 bars

OPTION 2: On **4 rigging points** in the grid (4x 500kg SWL)

We provide 4 chain hoists on which the structure will be mounted

In both situations the structure has to be stabilized to **4 rigging points** on the wall/bridge or if not possible otherwise, to the floor (4x 500kg SWL)

1 rigging point in the backstage (stage left) (SWL 150kg) at approximately 7m high for attribute ropes, as for a safety line for one of the acts

On the floor

2 rigging points in the back of the backstage (stage left and right) to rig a slack rope structure and to attach a safety line for one of the acts (500kg SWL)

Extra:

- During one of the scenes, which is an integral part of the show, there will be made use of a spring-powered air rifle. The lead bullets will be absorbed by our own backdrop. If applicable, the organizer provides all the obligatory permissions.
- During one of the scenes, which is an integral part of the show, a living chicken will be placed on stage. Unless discussed otherwise the organizer provides the chicken. (Latest 1 hours before show time)
- 4 volunteers/crewmembers during the show. After about 20 minutes after the start of the show, 4 crewmembers are needed to distribute champagne glasses in the audience. Preferable all dressed in white shirts. The briefing will happen latest 30 min. before show time. In case the champagne glasses (50) of the company are used, they have to be collected en washed after the show.



- For the last scène a pile of boxes of 2m by 2,5 which will be stored in the backstage during the show, will be slide on stage. Please mention if there is no such entrance (2,5m wide) available.
- 1 table, for guest book and posters + space for banner and T-shirt rack

Technicians: Minimum 2 technicians, which are familiar with all the installations and structures from the venue, must be provided; to help loading in and out; help with the set-up, program the present installations; are in the backstage during the show; help with the breakdown.
During the show, there should be at least 1 technician from the venue in the backstage.

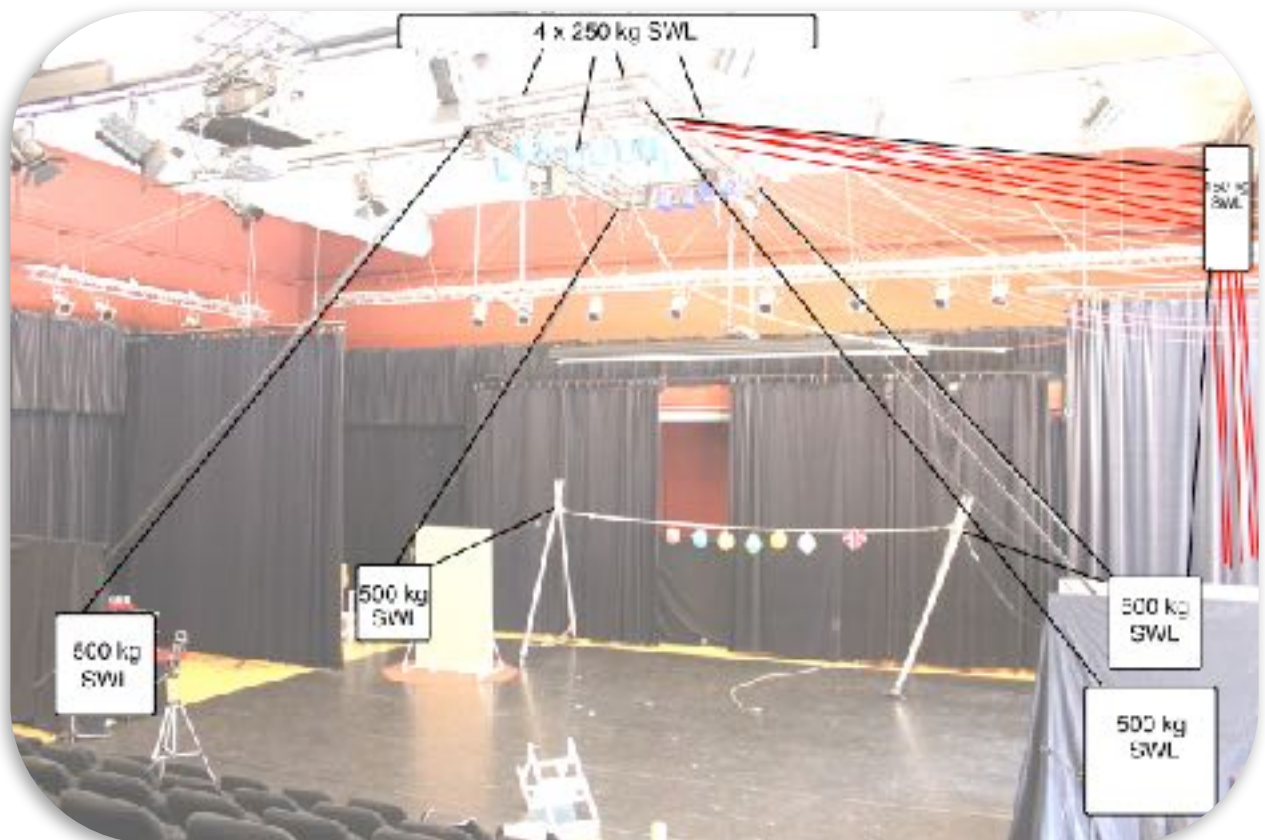
Sound:

- Sound system adapted to the venue
- 2 Monitors on stage (left, right)
- We bring our own laptop with audio card, which should be connected to the F.O.H.
- For large venues (to be confirmed with our technician):
2 Hypercardioide microphones (ex.: KM185, C420 SM81, Oktava MK 012) on a tripod

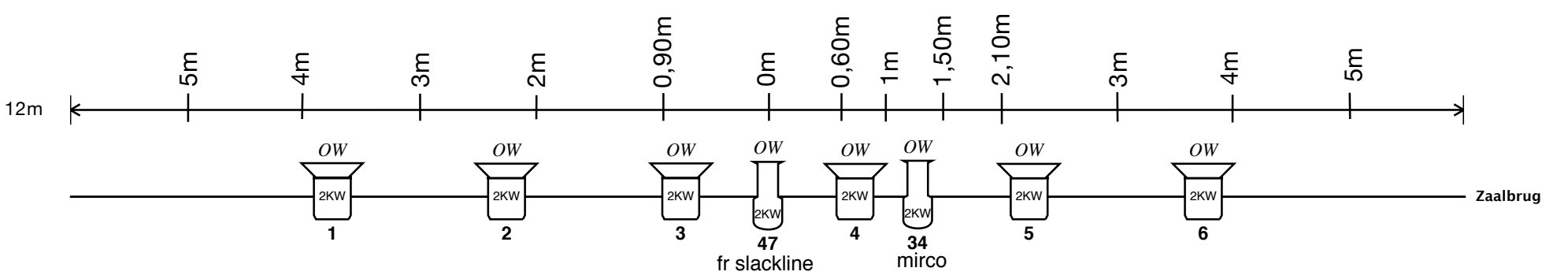
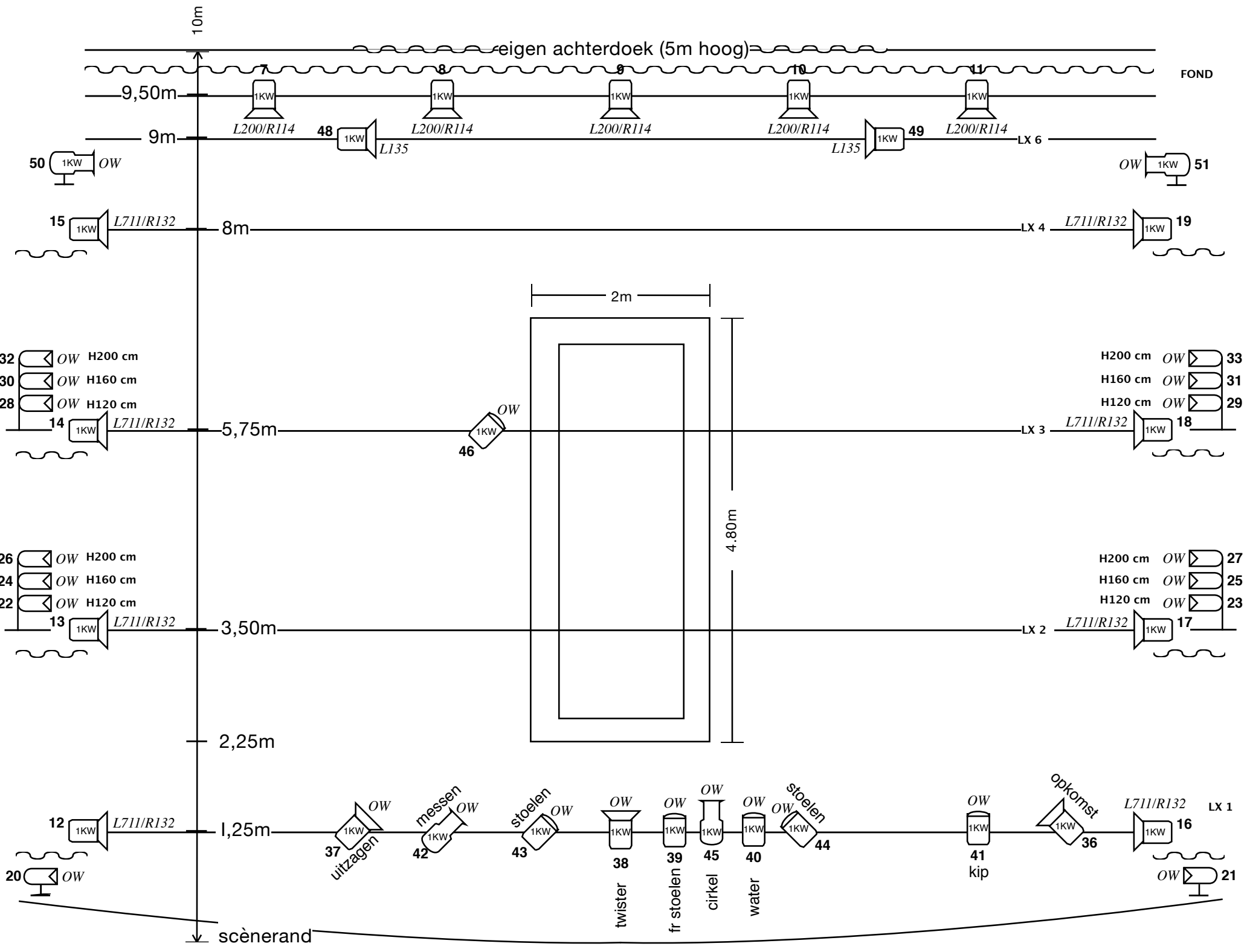
Light: All light is manipulated from the company's laptop in the backstage.
DMX-connection to be provided.



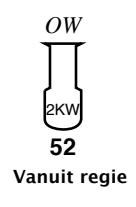
OPTION 1: The truss frame, directly attached to the fly system of the theatre.



OPTION 2: The truss frame attached with 4 fixed points in the grid, stabilized to 4 rigging points on the floor.



ZAAL:
 WERK:



LEGENDE:

	PAR 64 CP 62
	PC 1KW
	PC 2KW
	PROFIEL 1KW
	PROFIEL 2KW
	FLAPPEN

8 years, 5 months, 4 weeks, 2 days		Light Plot
Venue: Bert & Fred		
Designer: Lorelinde Hoet & Bregt Janssens		
17/01/18		